



GAT MONTHLY MEMBERSHIP PROGRESS REPORT

Results as of: 9/30/2022

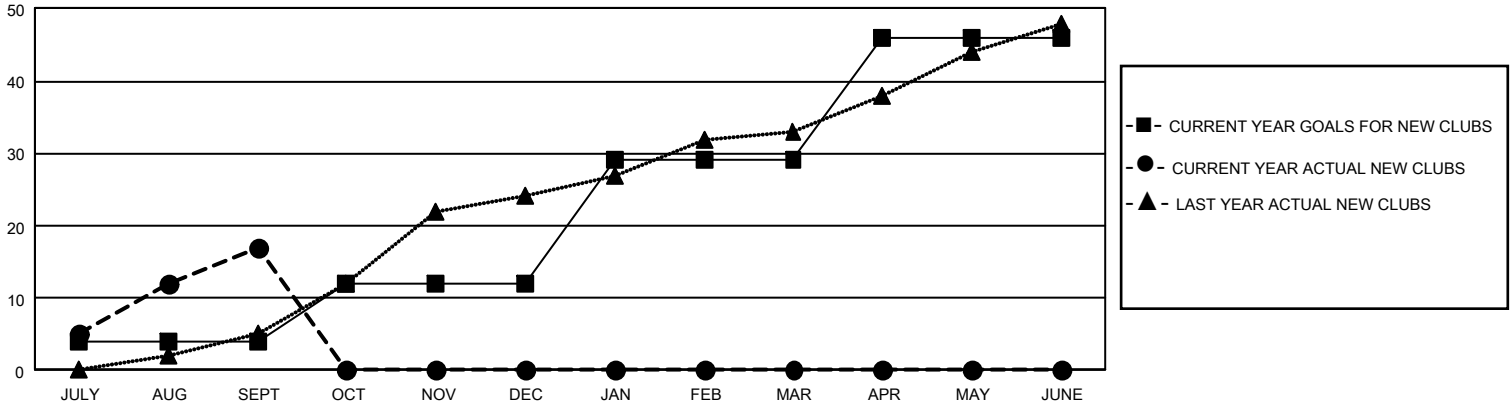
GAT Constitutional Area 7

REPORT DOES NOT INCLUDE CLUBS IN UNDISTRICTED AREAS.

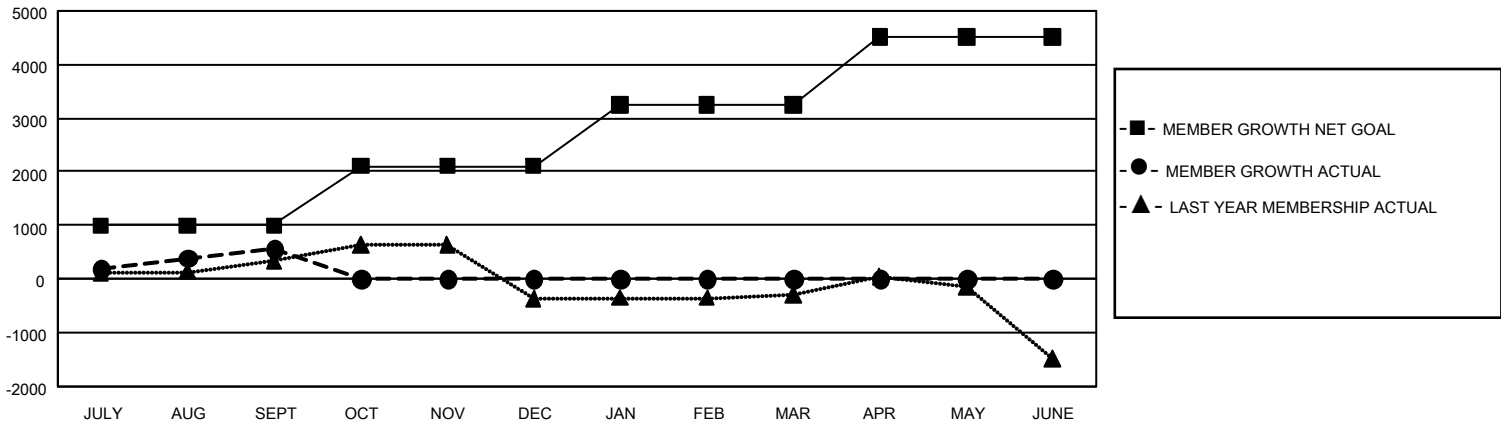
Clubs			
RESULTS FOR 2022-2023			
QUARTER	NEW CLUB GOAL	NEW CLUBS	DROPPED CLUBS
JULY/AUG/SEPT	12	17	13
OCT/NOV/DEC	24	0	0
JAN/FEB/MAR	51	0	0
APR/MAY/JUNE	51	0	0

Members			
RESULTS FOR 2022-2023			
QUARTER	MEMBER GROWTH NET GOAL	MEMBER GROWTH ACTUAL	DROPPED MEMBERS ACTUAL (including transfers)
JULY/AUG/SEPT	996	1,894	990
OCT/NOV/DEC	1105	0	0
JAN/FEB/MAR	1149	0	0
APR/MAY/JUNE	1270	0	0

GOALS AND ACTUAL NEW CLUBS CUMULATIVE



GOALS AND ACTUAL MEMBERS CUMULATIVE



DROPPED CLUBS: 13	523 CLUBS OF 1,860 ADDED 1 OR MORE NEW MEMBERS	GENDER DISTRIBUTION
DROPPED MEMBERS	CLICK HERE FOR CUMULATIVE MEMBERSHIP DATA	MALE 24,815 (58.19%)
DECEASED 138		FEMALE 17,818 (41.78%)
CLUB CANCELLED 0		NON BINARY 4 (0.01%)
OTHER 855		PREFER NOT TO ANSWER 8 (0.02%)
TOTAL 993		TOTAL FAMILY UNIT MEMBERS 7,413
		FAMILY MEMBERS PAYING HALF DUES 4,020